

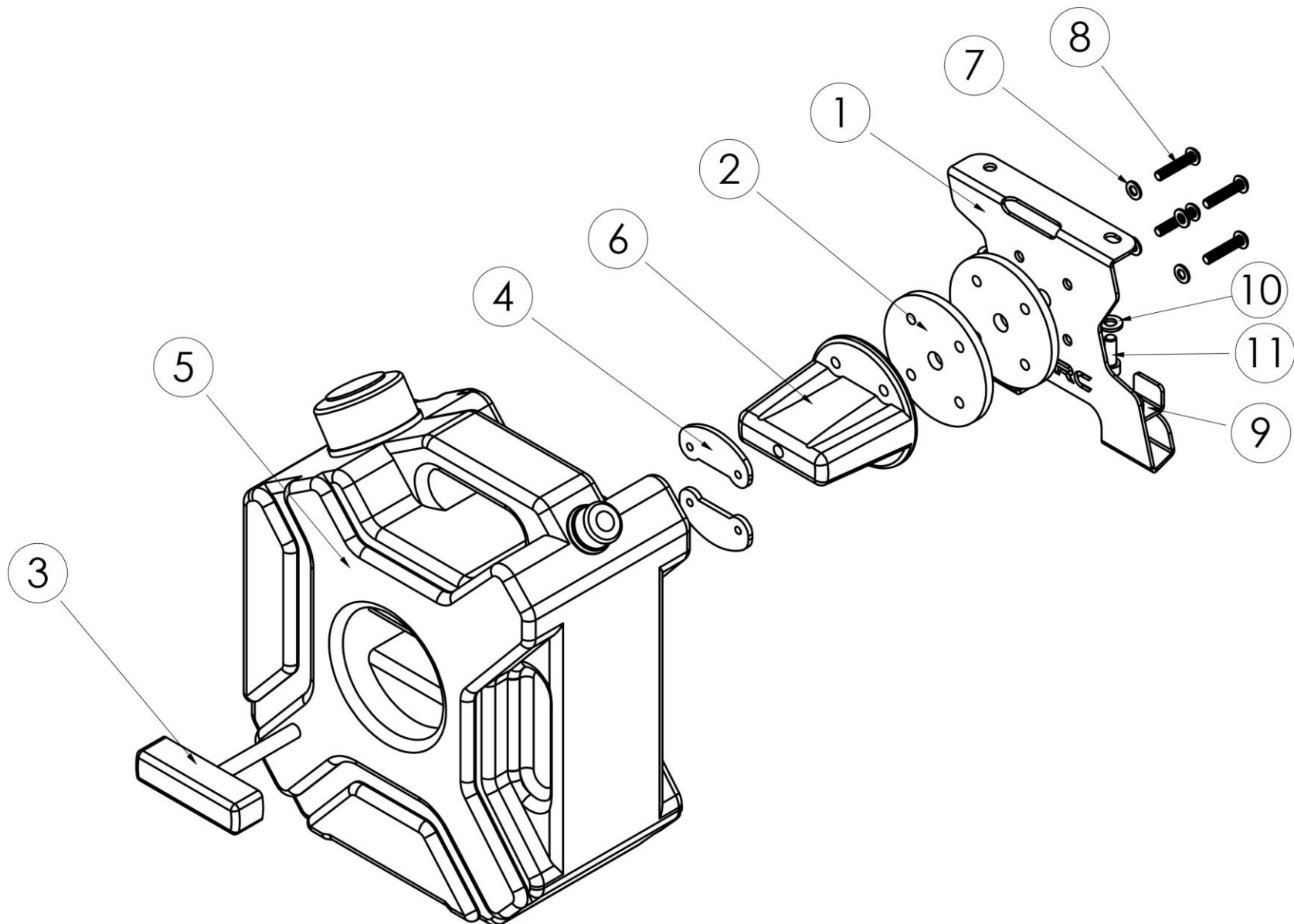
Scope of Supply/Bill of Material & Mounting Drawings

Part Number: R-HM18-27-01-R / R-HM18-27-01-L / R-HM18-27-02-R / R-HM18-27-02-L / R-HM18-28-01-R / R-HM18-28-01-L / R-HM18-28-02-R / R-HM18-28-02-L

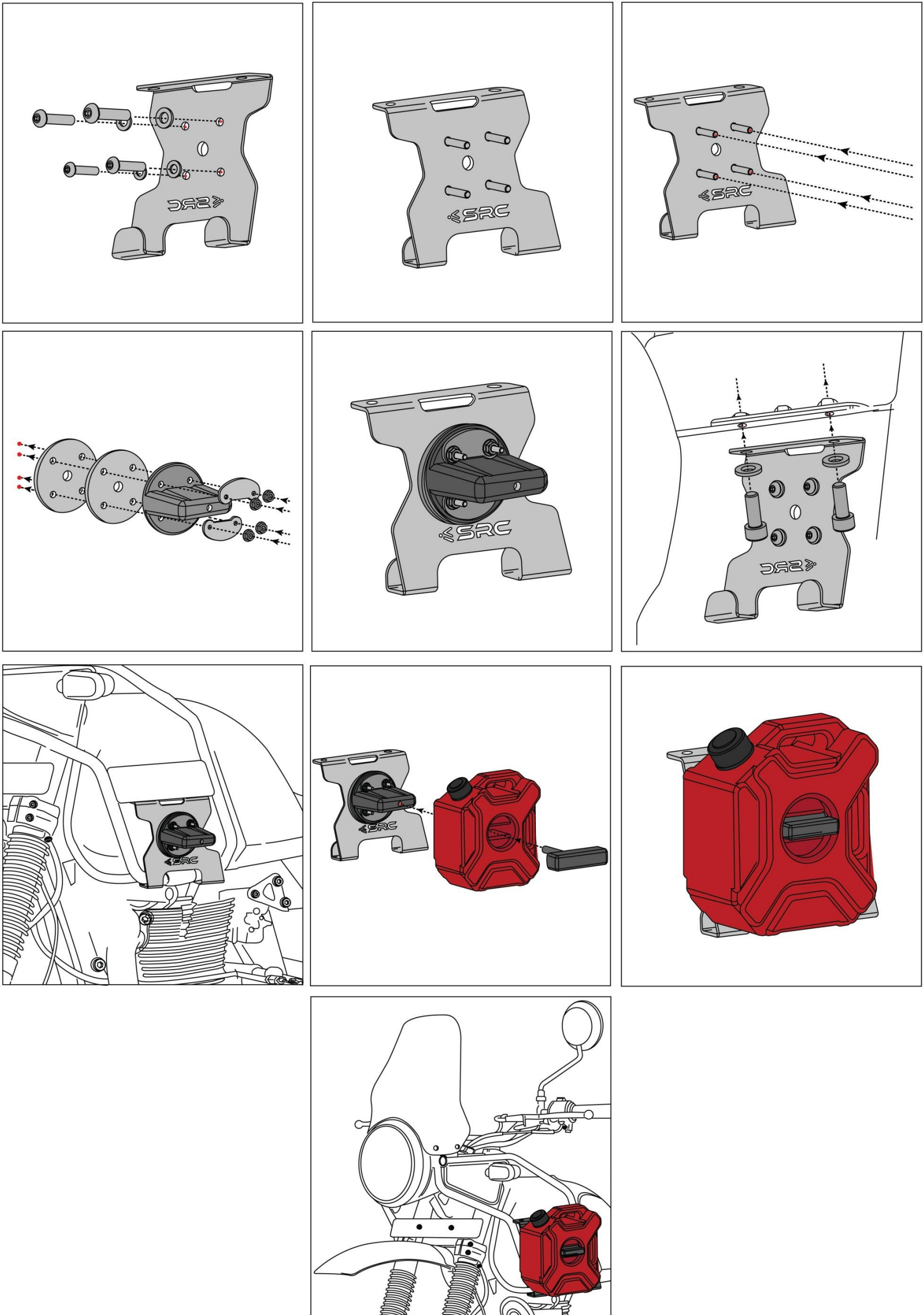
Part Description: Set Oil Tank – Royal Enfield Himalayan

Installation / Parts List / Bill of Material for Mounting

NO.	Description	Quantity	Torque * (N-M)	Remarks **
1	Mounting Bracket	1		
2	Stack plates	2		
3	Knop	1		
4	Buffer Plates	2		
5	Oil Tank	1		
6	Wedge	1		
7	Washer M5	4		
8	Screw M5 X 25	4	5 - 6	Use Liquid Thread Locker
9	Rubber Pads	2		
10	Washer M6	2		
11	Screw M6 X 16	2	9 - 10	Use Liquid Thread Locker
SRC Design uses Metric System of Measurement and all dimensions in Millimeters				
* Recommended to use the Torque specified in the table				
** Denotes Usage of Liquid Thread Locker in specified Locations				



MOUNTING DRAWINGS



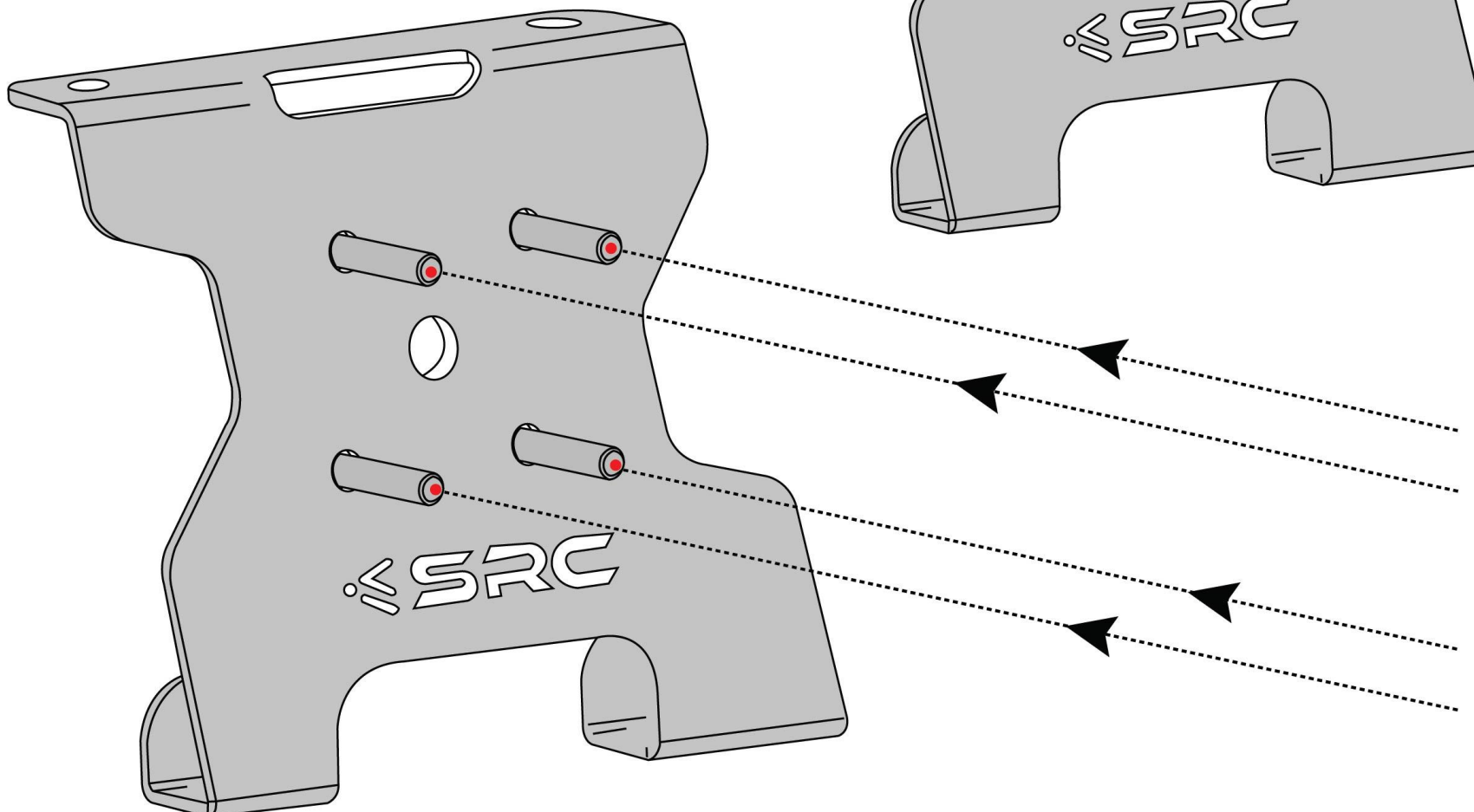
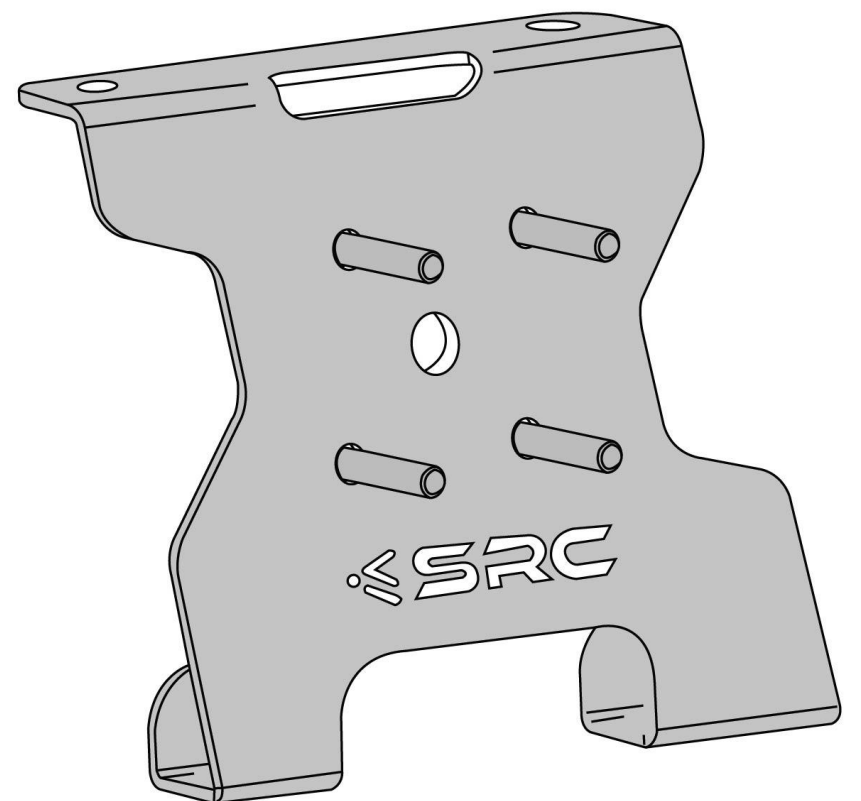
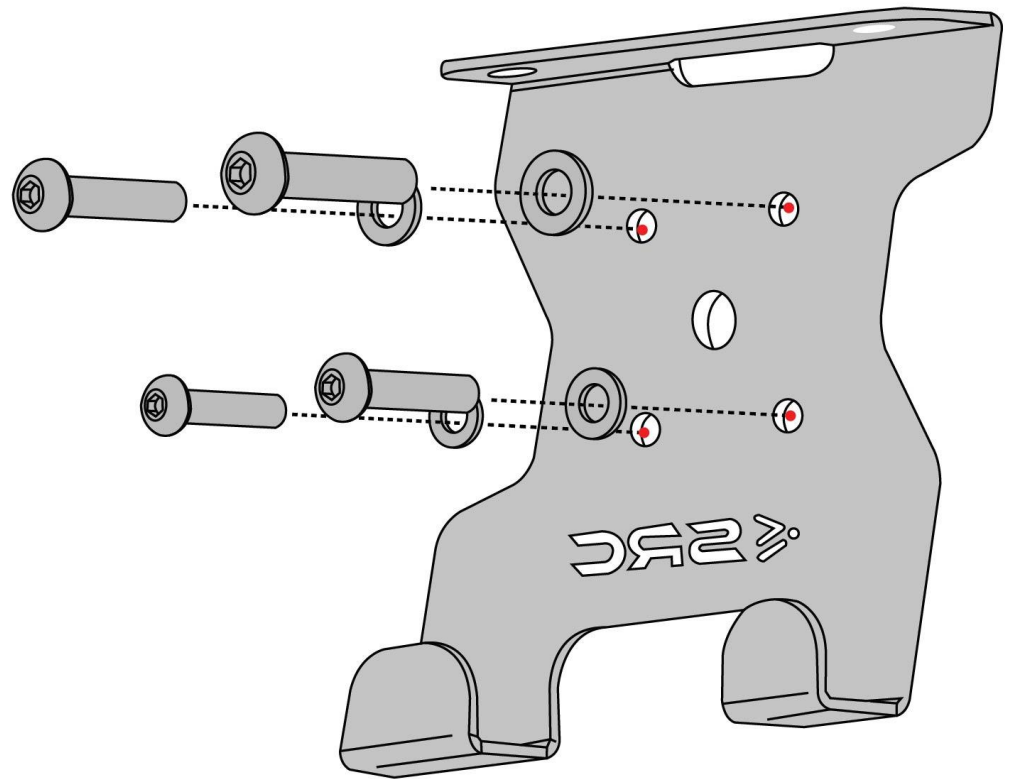
Mounting Instructions

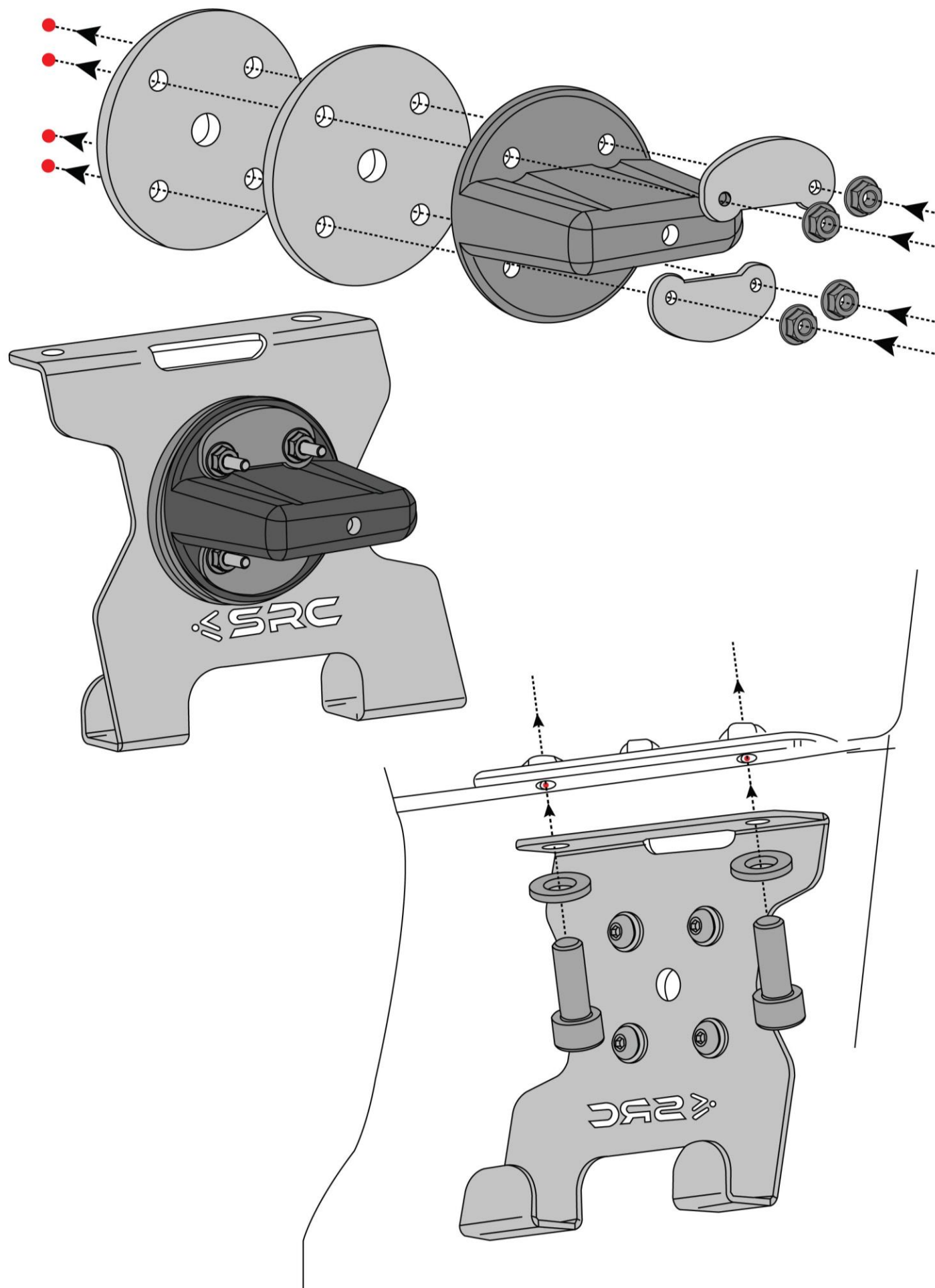
Step – 1

During the First stage of the assembly and mounting, the Mounting Bracket and Stack plates can be assembled Off-line (as shown in the drawing)

All the Parts in the Oil Tank Set Assembly, Except (3) (Knob) and (5)(Oil Tank), all the other parts can be assembled Off-line.

Insert the M5 Washers and M5 x 25 Screws {(7) & (8)} from the rear side of the Mounting Bracket (1) as Identified by "Red" points in the drawing



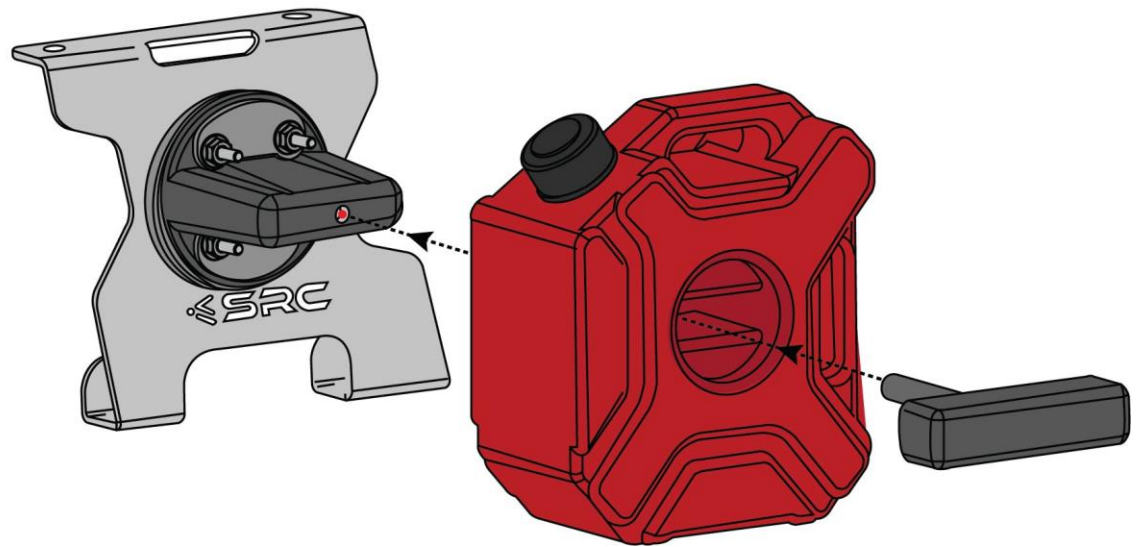


Step – 2

Insert the Stack plates (2) through, as shown and assemble the Wedge (6) and Buffer plates (4) – 2 off on top and bottom, and tighten the M5 Nut to each of the Screws as shown.

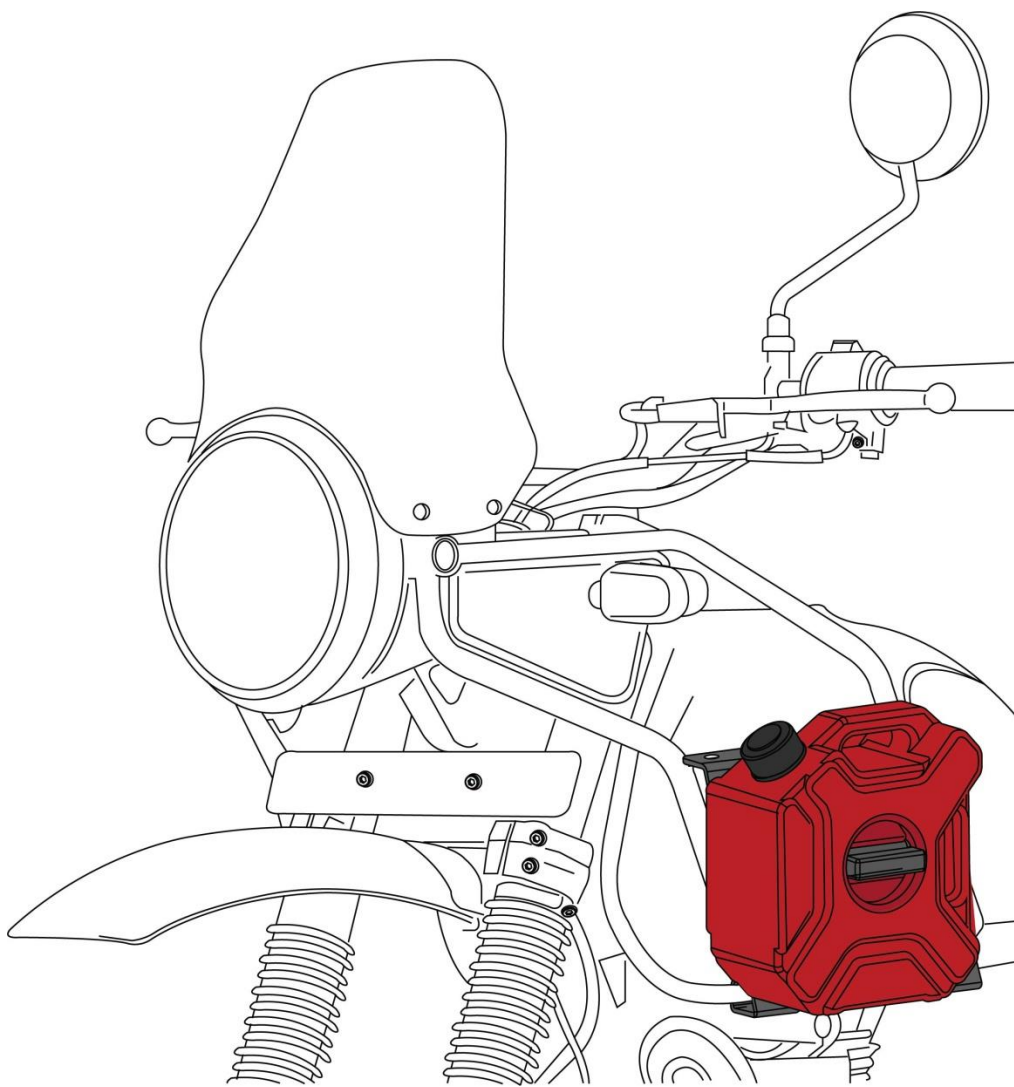
The bracket as assembled Off-line can be taken to the Motorbike and mounted using (10) & (11) M6 Washer and M6 x 16 Hexagonal Socket head cap screws.

Insert the Rubber Pads – 2 off (9) as a padding to the bottom side of the bracket and this will ensure it is not fouling / scoring / or damaging the Motorbike bracket.



Step – 3

The Oil Tank (5) and Knob (3) can be mounted to the Mounting Bracket Sub-Assembly, as shown and once the position is Oriented to the wedge and can be tightened, butting against the Counter bore face of the Oil tank.



General Instructions

1. The Oil Tank is an accessory, which can be mounted in the front, adjoining the Main fuel tank (Capacity 15 litres) to carry additional 3/5 Litres, which comes in handy, during a long haul. It is made out of Non-explosive plastic and SRC's scope covers the mounting bracketry to hold this fuel tank. It can be fitted on the LH Side or RH Side and it is left to the discretion of the customer. The Motorbike has provision to mount bracketry to carry additional Oil tank, in which case it has to be fitted to the opposite side to ensure payload symmetry.
2. We request you to pay attention to the Mounting Instructions in this document and follow the step-by-step procedures.
3. This Mounting Instruction manual is a "Do It Yourself" (DIY) fitment manual of the Accessory part to the Vehicle. We have prepared this based on our experience and knowledge, related to the Vehicle, Part and its functional aspects.
4. SRC cannot guarantee the interchangeability of the parts to any other manufacturer's accessory part. It is advised to the User, to inspect and ensure the original state of all other Vehicle parts.
5. We request you to bear in mind, that the Installed part can change the driving behaviour and/or the stability during driving or any other dynamic conditions.
6. If you have the appropriate tools and another person to assist you in the mounting, it will help.
7. After Completion of the Mounting and before taking on a First ride, Ensure and Check all functions of the Vehicle. It is always advised to check loosening of the fasteners after the first 50 kilo meters of ride and at regular intervals.
8. We are showing here the Scope of Supply/ Installation/Parts list & BOM from SRC
9. To the maximum extent possible, our design use the current Mounting/Fitment of the Original Equipment, so that Installation of these accessories will not affect the Payload or Function of the Vehicle or the Part on which it is mounted to protect it
10. If any additional modifications are to be done, prior to the fitment of the accessories, it will be explicitly specified in the instruction sheets.