

Scope of Supply/Bill of Material & Mounting Drawings

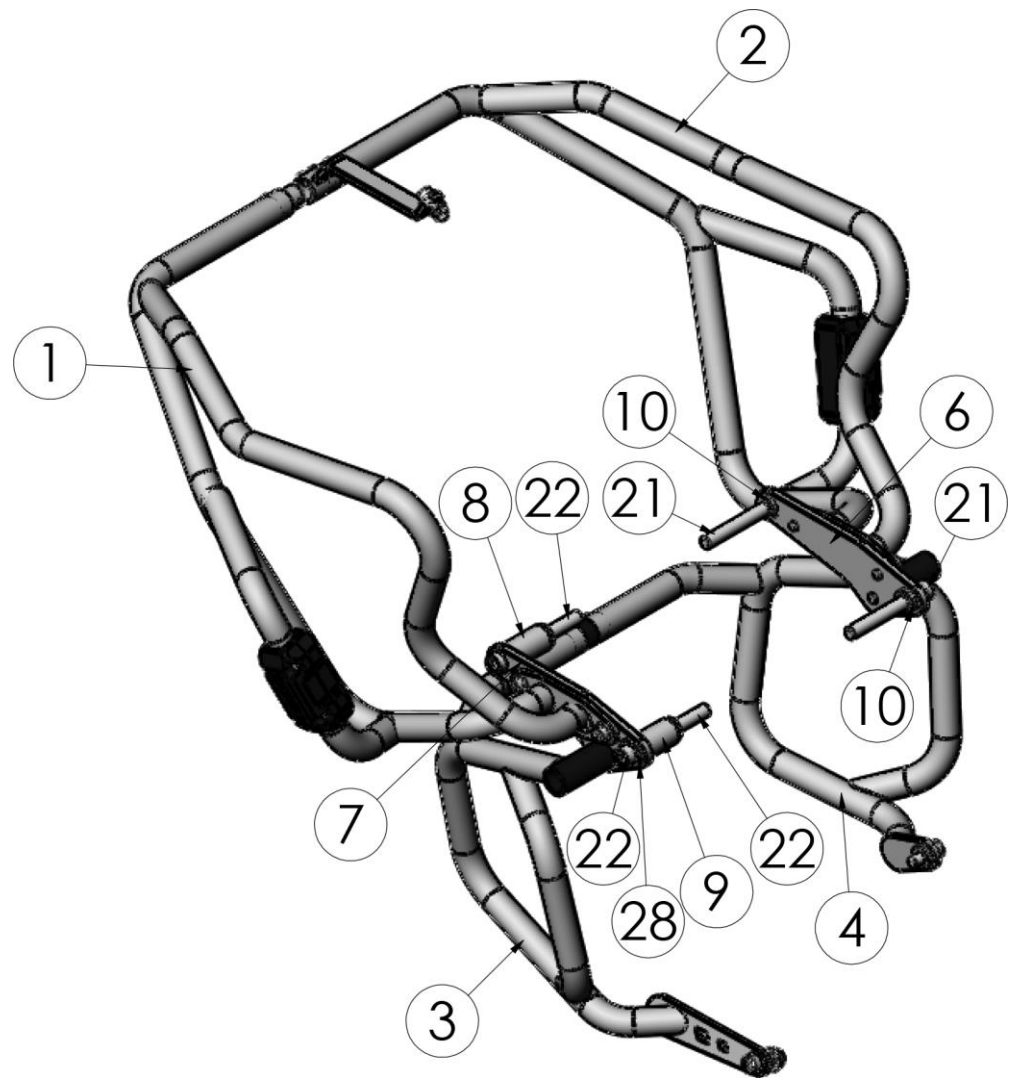
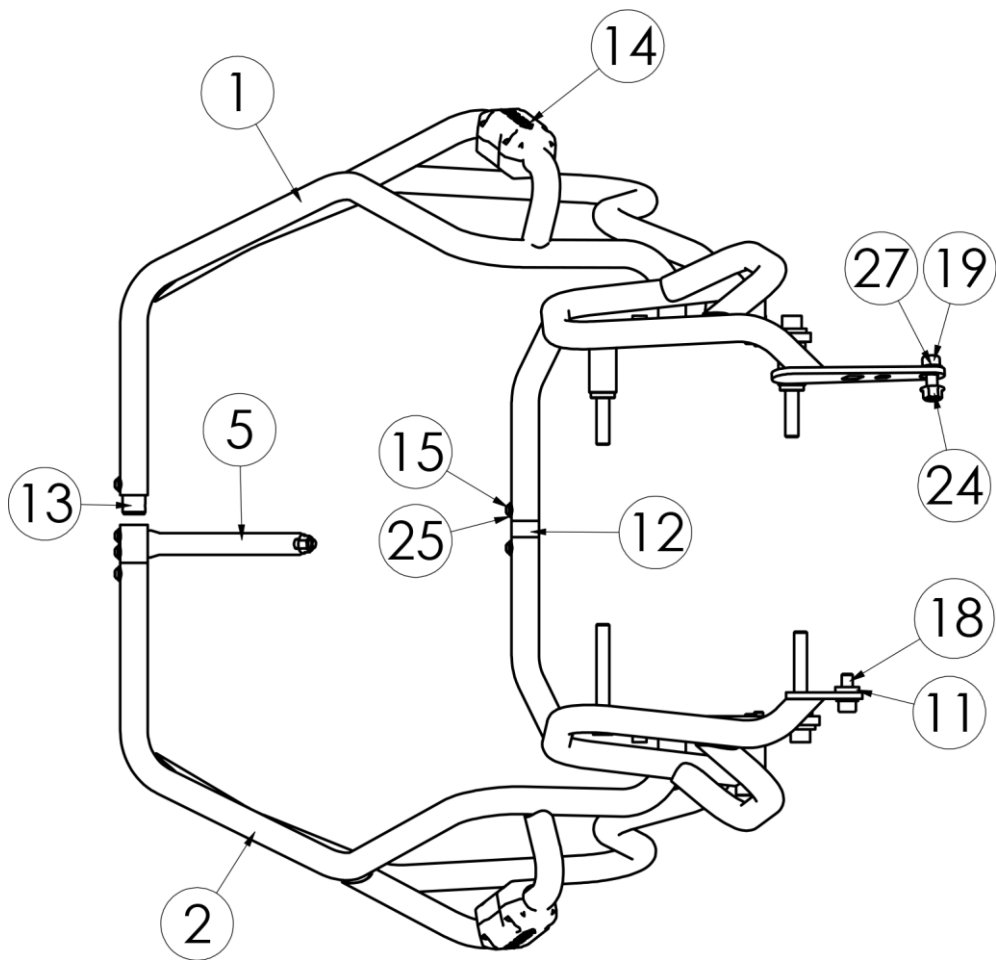
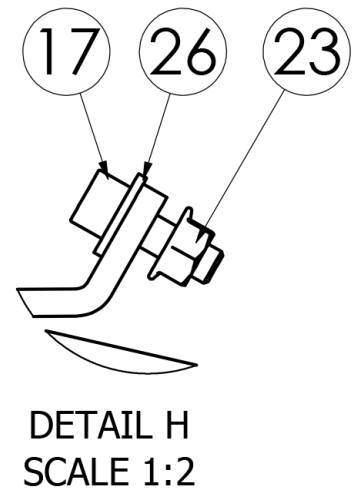
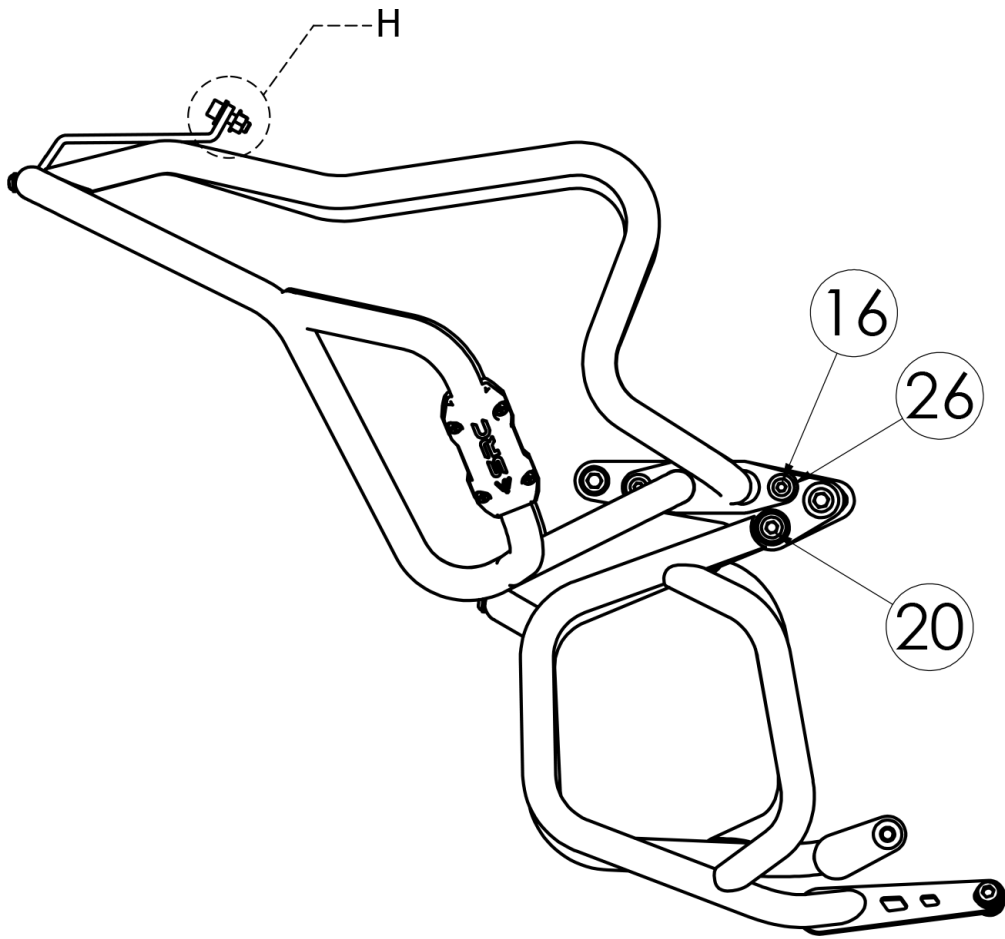
Part Number: BMW-F750GS-17-01-SL / BMW-F750GS-17-02

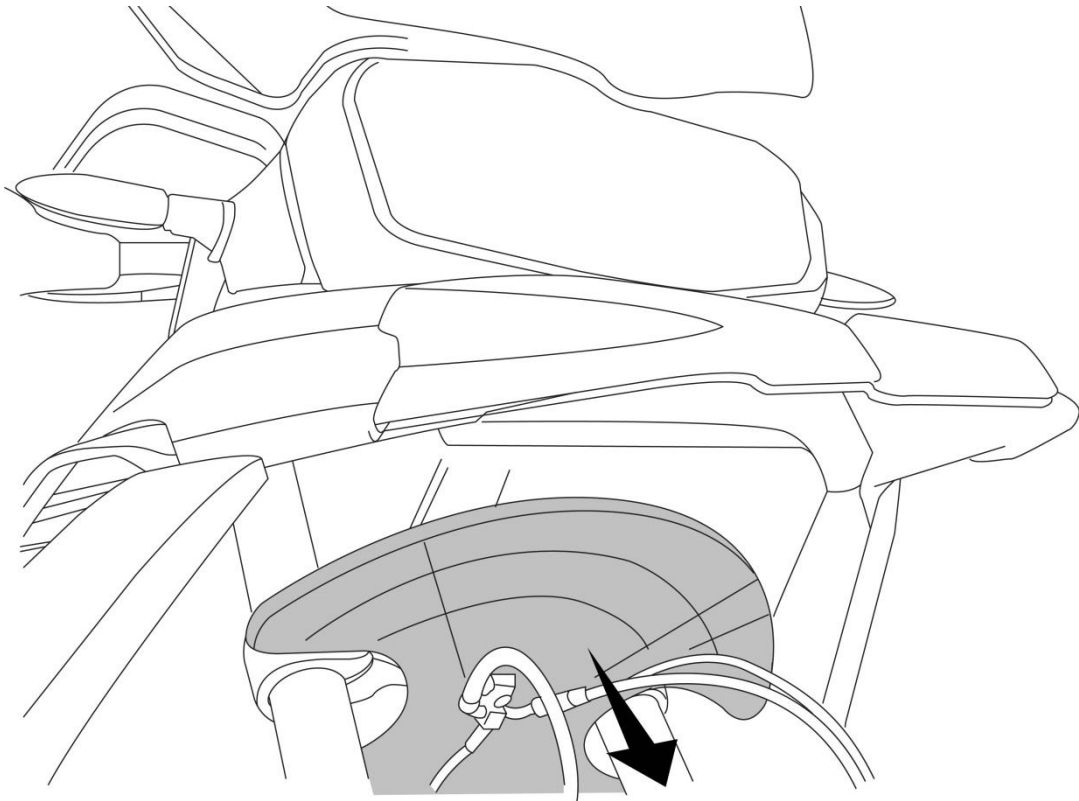
Part Description: Crash bar BMW F750 GS / F850GS

Applicable to both Stainless Steel and Steel Versions

Installation / Parts List / Bill of Material for Mounting

NO.	Description	Quantity	Torque * (N-M)	Remarks **
1	Crash Bar Top LH	1		
2	Crash Bar Top RH	1		
3	Crash Bar Lower LH	1		
4	Crash Bar Lower RH	1		
5	Bracket Top	1		
6	Bracket RH	1		
7	Bracket LH	1		
8	Bush A	1		
9	Bush B	1		
10	Bush C	2		
11	Bush D	1		
12	Pin pipe	3		
13	Pin pipe upper	4		
14	Slider Guards	2		
15	Socket button head Screw M6x15	6	9-10	Use Liquid Thread Locker
16	Socket head cap Screw M8x20	4	22-24	Use Liquid Thread Locker
17	Socket head cap Screw M8x25	1	22-24	Use Liquid Thread Locker
18	Socket head cap Screw M10x25	1	44-48	Use Liquid Thread Locker
19	Socket head cap Screw M10x30	1	44-48	Use Liquid Thread Locker
20	Socket head cap Screw M10x35	2	44-48	Use Liquid Thread Locker
21	Socket head cap Screw M12x90	2	76-78	Use Liquid Thread Locker
22	Socket head cap Screw M12x100	2	76-78	Use Liquid Thread Locker
23	Nut M8	1		
24	Nut M10	1		
25	Wash M6	6		
26	Wash M8	5		
27	Wash M10	2		
28	Wash M12	2		
SRC Design uses Metric System of Measurement and all dimensions in Millimeters				
* Recommended to use the Torque specified in the table				
** Denotes Usage of Liquid Thread Locker in specified Locations				





Before starting to mount the Top Bracket .

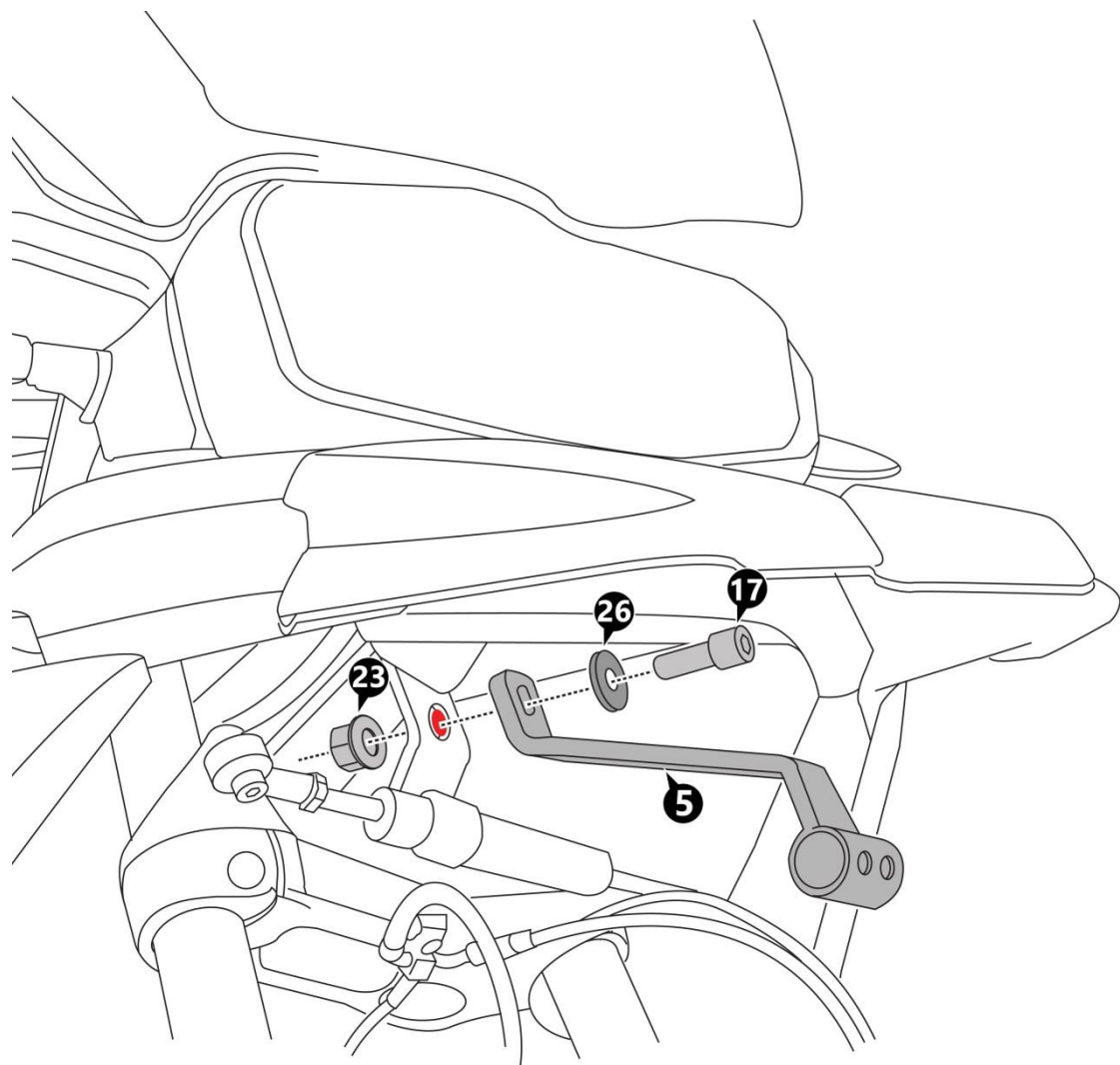
The Original Hole for mounting the Top Bracket (5) can be found in-between the front forks and positioned inside.

Step 1:

Orient, Mount and Fit the Top Bracket (5) to the Motorbike Chassis frame. (as show red Color)

Use M8 x 25 Screw (17) – 1 off and Washer M8 (26) – 1 off, and Nut M8 (23) - 1 off as shown in the BOM table and the drawing.

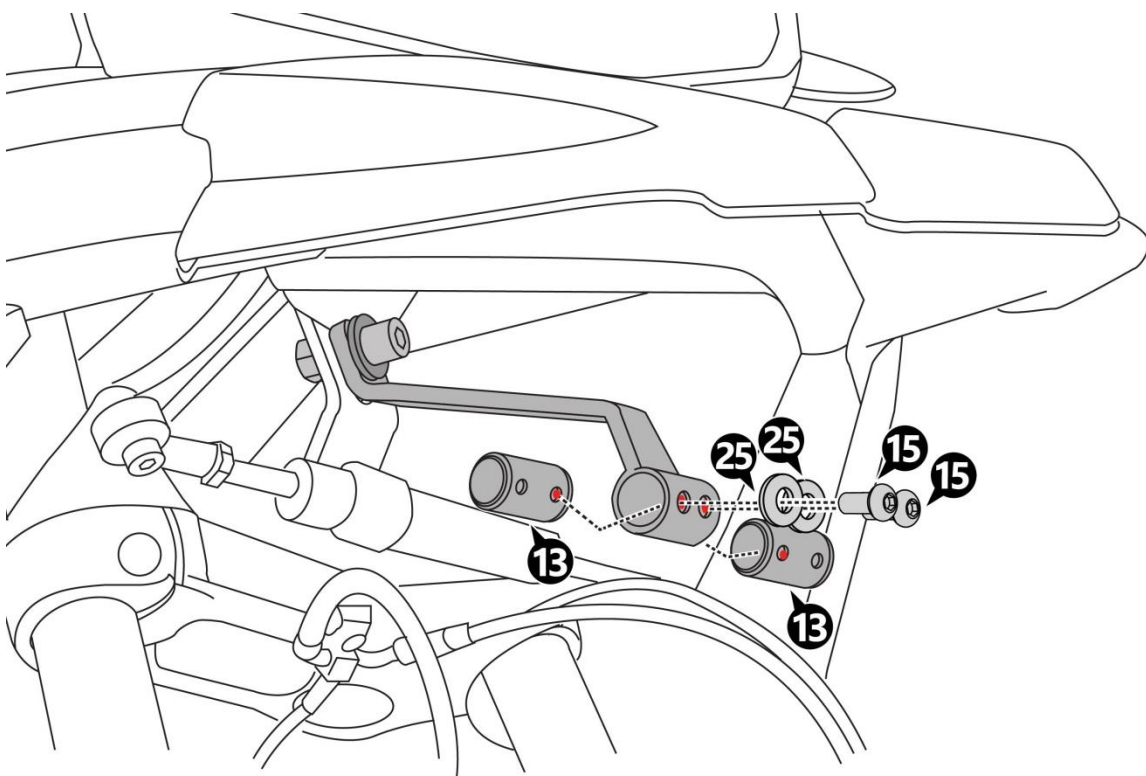
Do not tighten the screws fully.



Step 2:

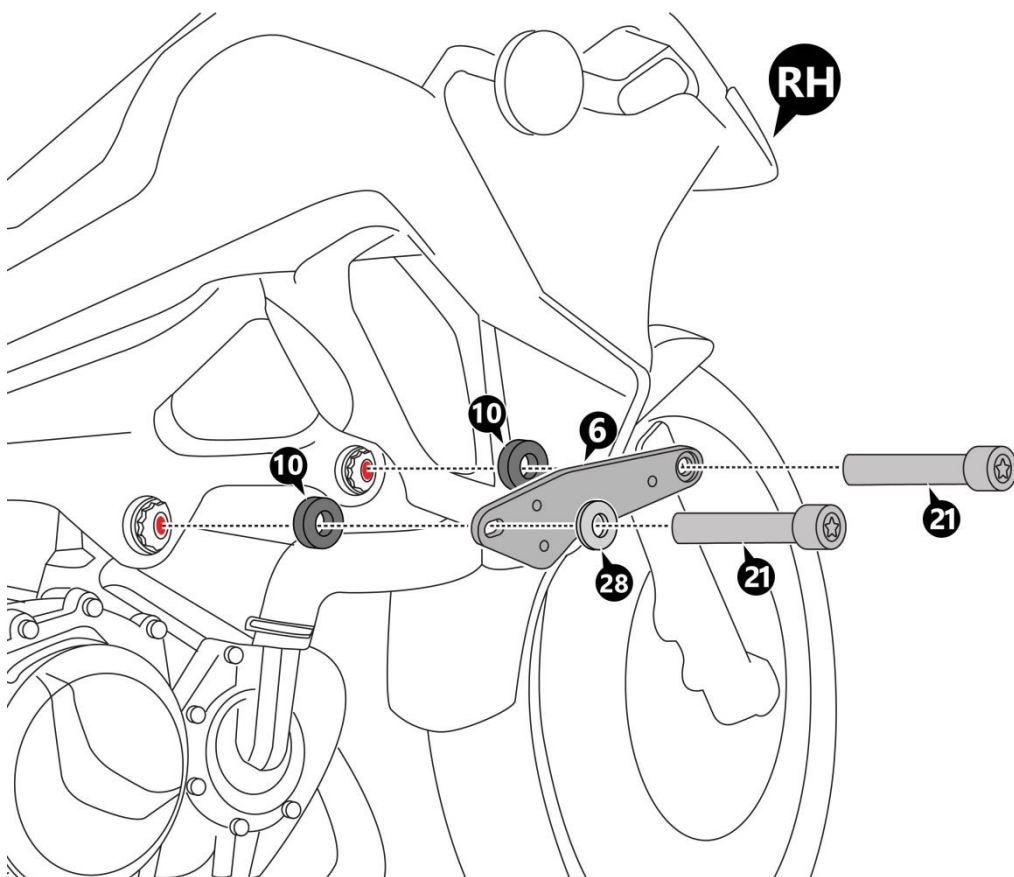
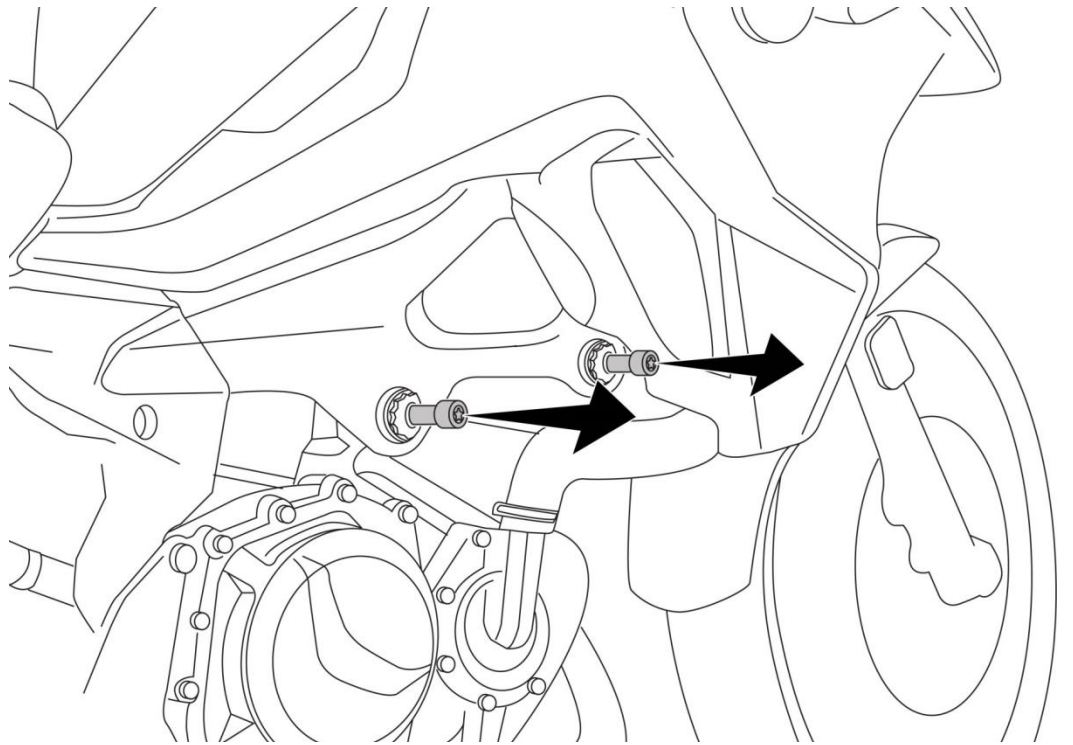
Orient and slide the Pin pipe upper (13) in the Top Bracket (5).

**Use the screws M6 x 15 (15) - 2 off
Washer M6 (25) - 2 off
(as show red color)**



Step 3:

Before starting to mount the Bracket ,
we have to unscrew the Mounting - 2
Original Screw in Motorbike. (As
shown)



Step 4:

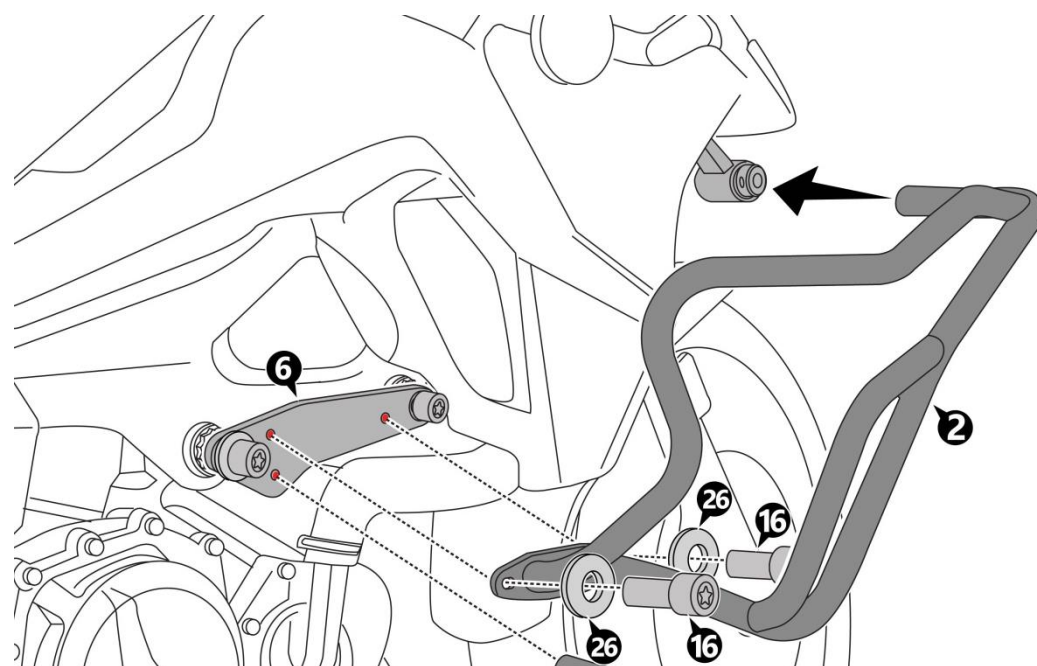
**Orient the Bracket RH (6) is to be
mounted to the Motorbike
Chassis Frame as shown.**

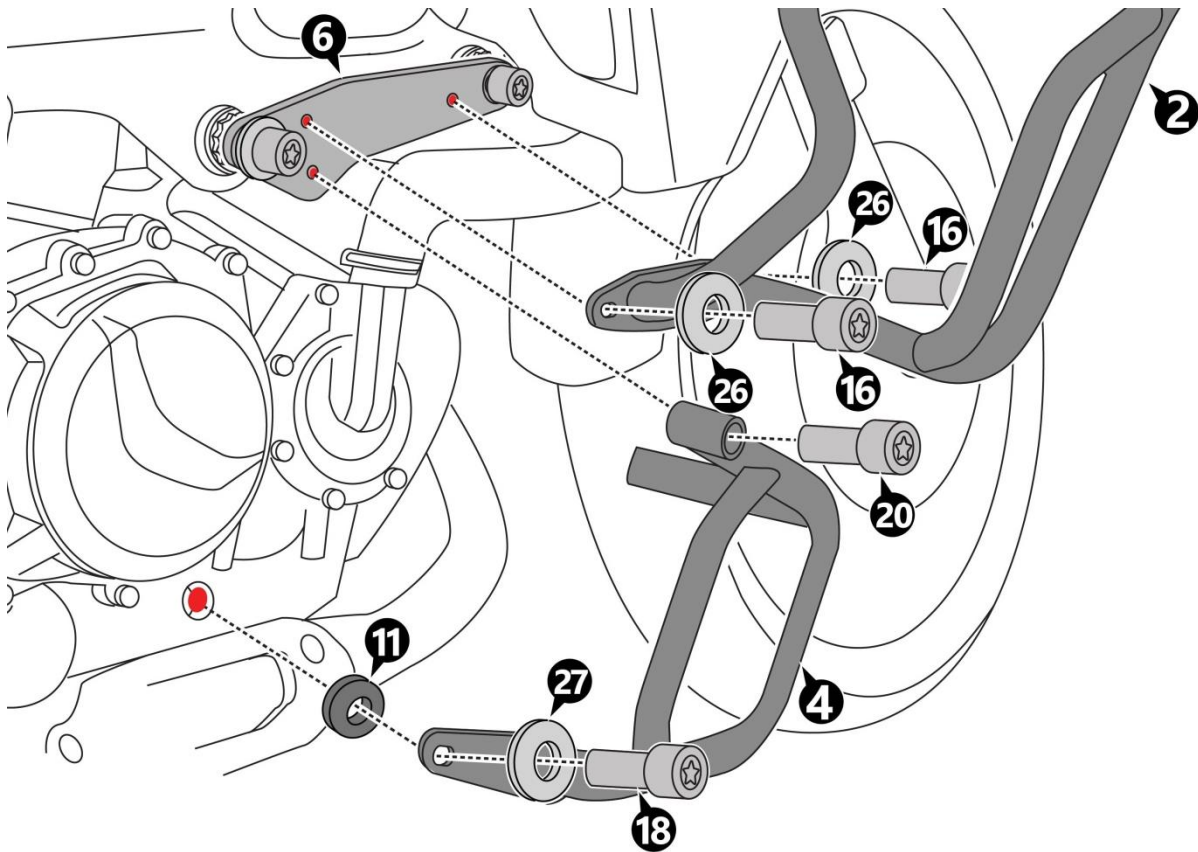
**Slide-in the Bush (10) -2 off,
Washer (28) -1 off, Screw M12 x
90 (21) –2 off, and through the
Mounting hole in the Bracket RH
(6) and secure the threads in the
Motorbike.**

Step 5:

**Orient the Top End of the Crash Bar RH (2) to
the Pin pipe Upper (13) attached to the Top
Bracket (5).**

**And Slide-in Screw M8x20 (16) – 2 off and
Washer M8 (26) – 2 off through the
Mounting hole in the Crash Bar RH (2) to the
Bracket RH (6) as show red color .**



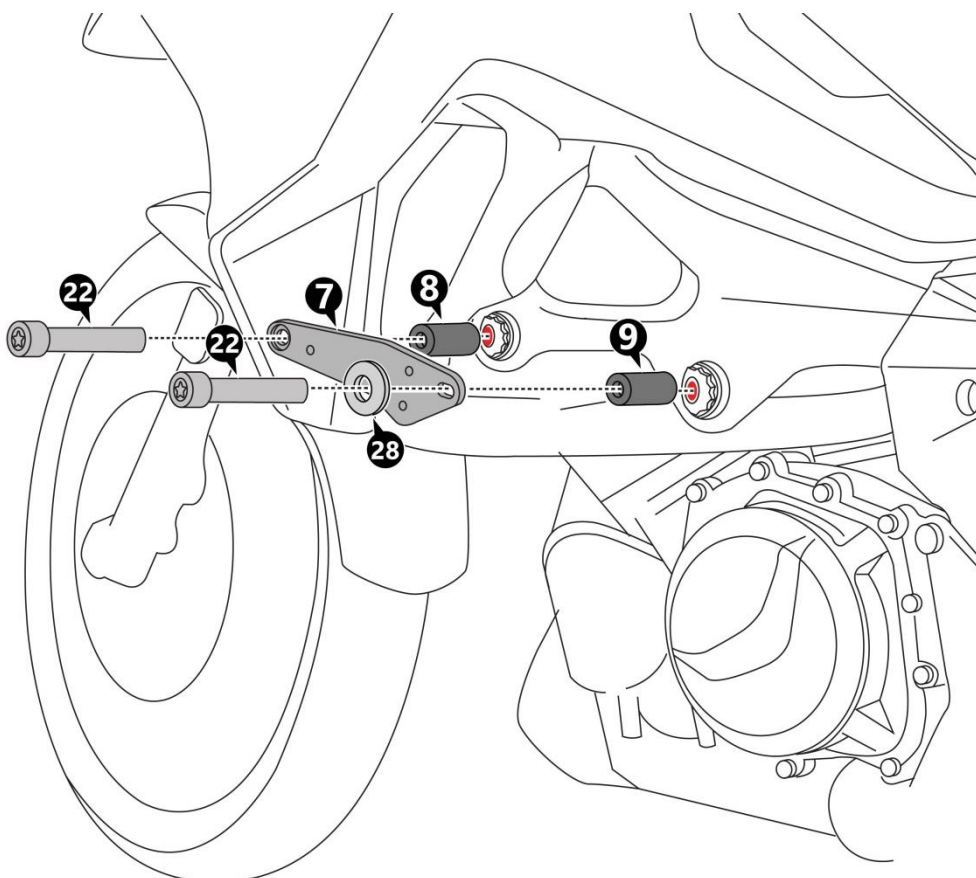
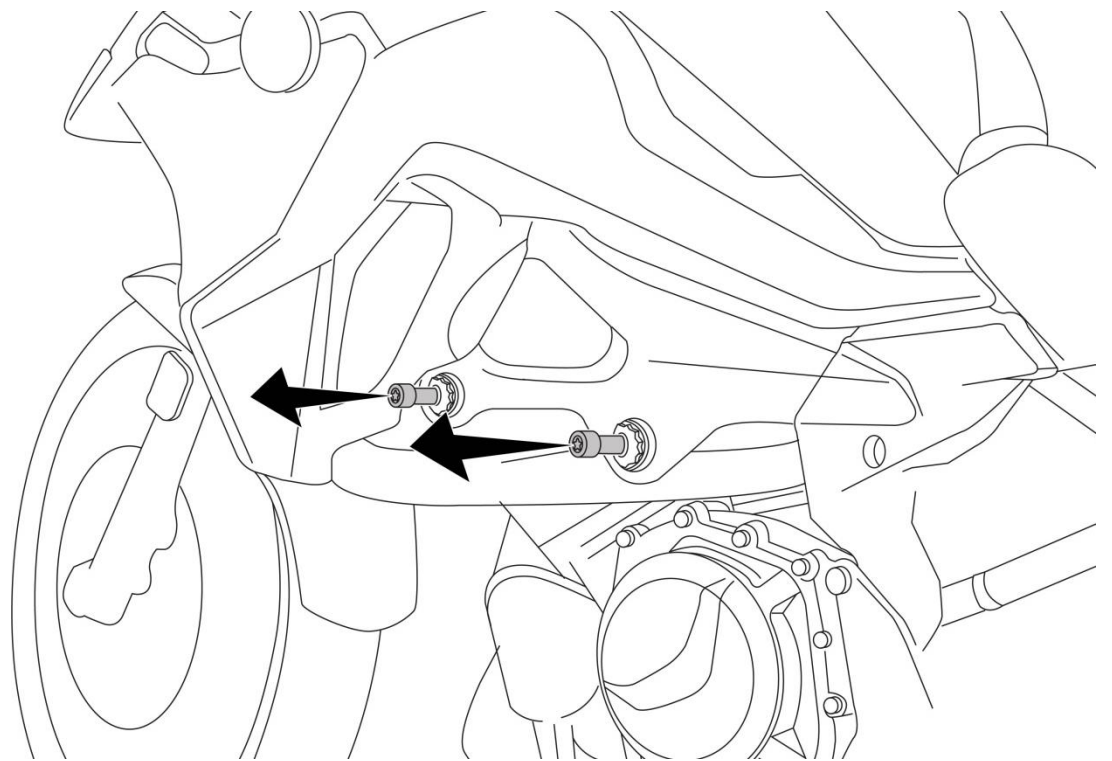


Step 6:

Slide-in the Screw M10 x 35 (20) –1 off , Bush D (11), Washer M10 (27) the Screw M10 x 25 (18) –1 off , the Lower Crash Bar RH (4) and through the Mounting hole in the Bracket RH (6) and secure the threads in the Motorbike.

Step 7:

Repeat the step 3 , to mount the Bracket LH (3),
We have to unscrew the Mounting - 2 Original Screw in Motorbike.
(As shown) .



Step 8:

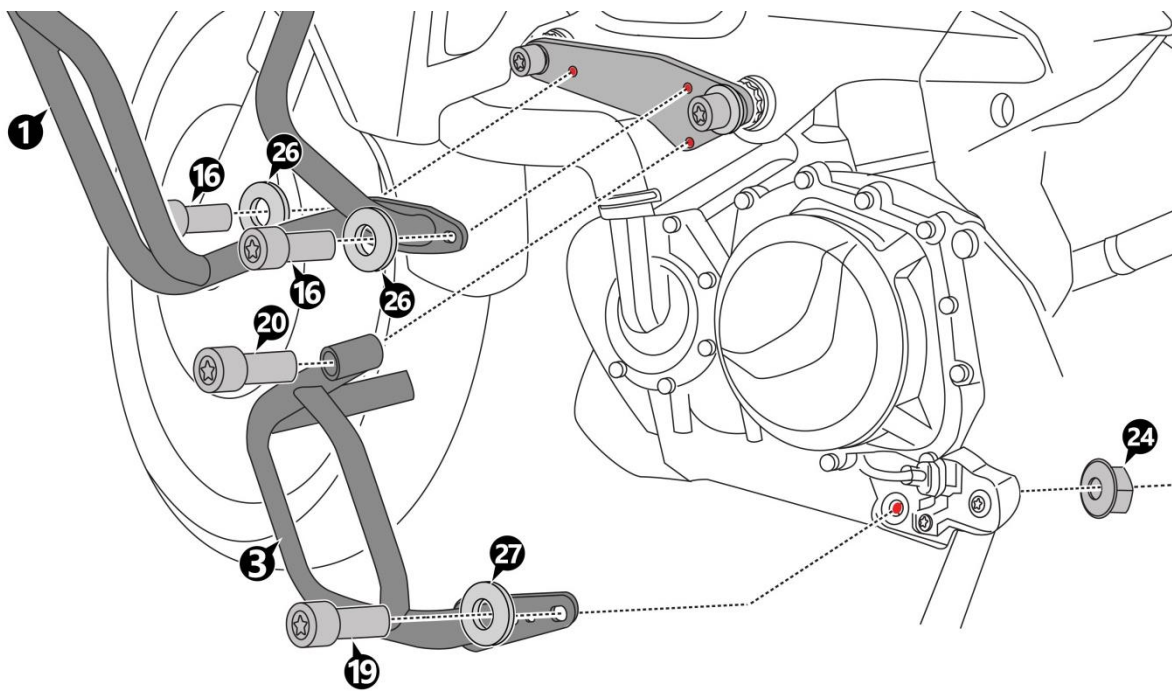
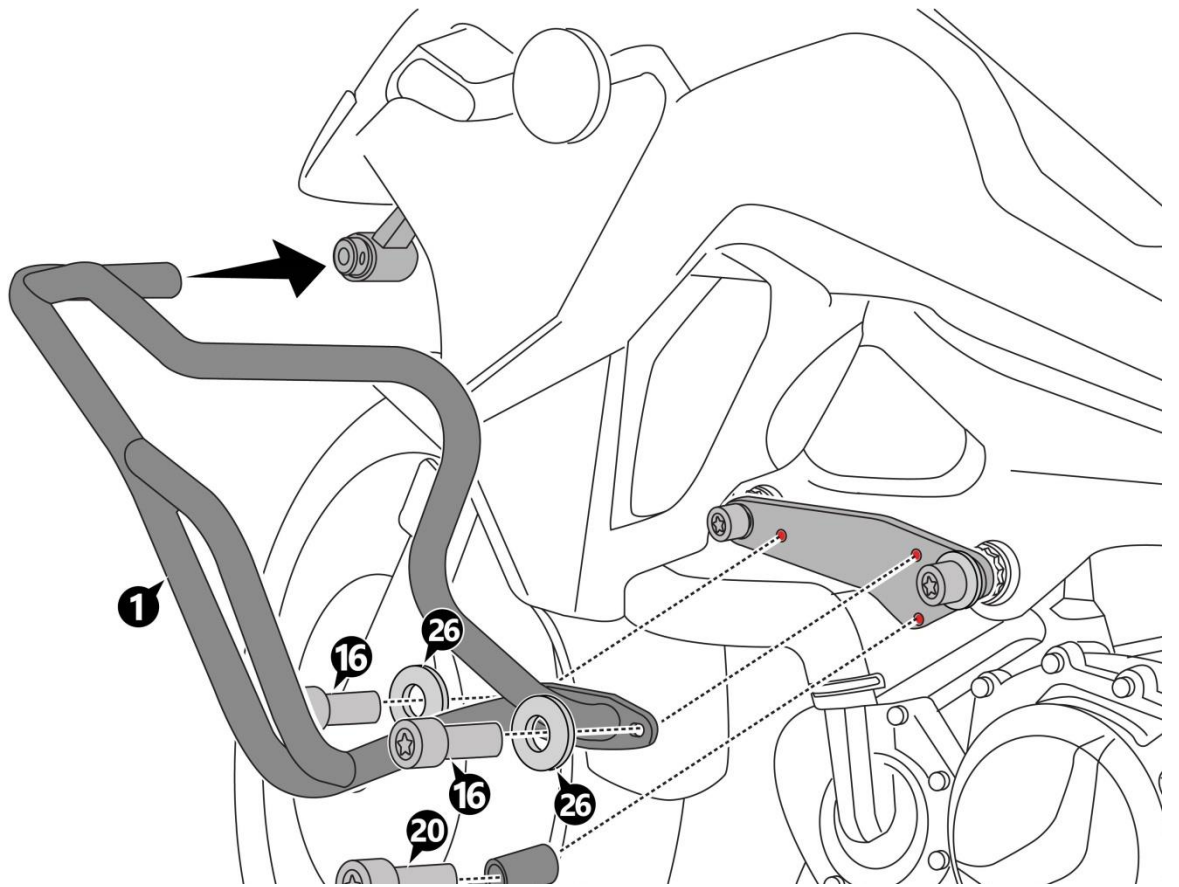
Orient the Bracket LH (7) is to be mounted to the Motorbike Chassis Frame as shown.

Slide-in the Bush (8),(9) -2 off, Washer (28) -1 off, Screw M12 x 100 (22) –2 off, and through the Mounting hole in the Bracket LH (7) and secure the threads in the Motorbike.

Step 9:

Orient the Top End of the Crash Bar LH (1) to the Pin pipe Upper (13) attached to the Top Bracket (5).

And Slide-in Screw M8x20 (16) – 2 off and Washer M8 (26) – 2 off through the Mounting hole in the Crash Bar LH (1) to the Bracket LH (7) as show red color .



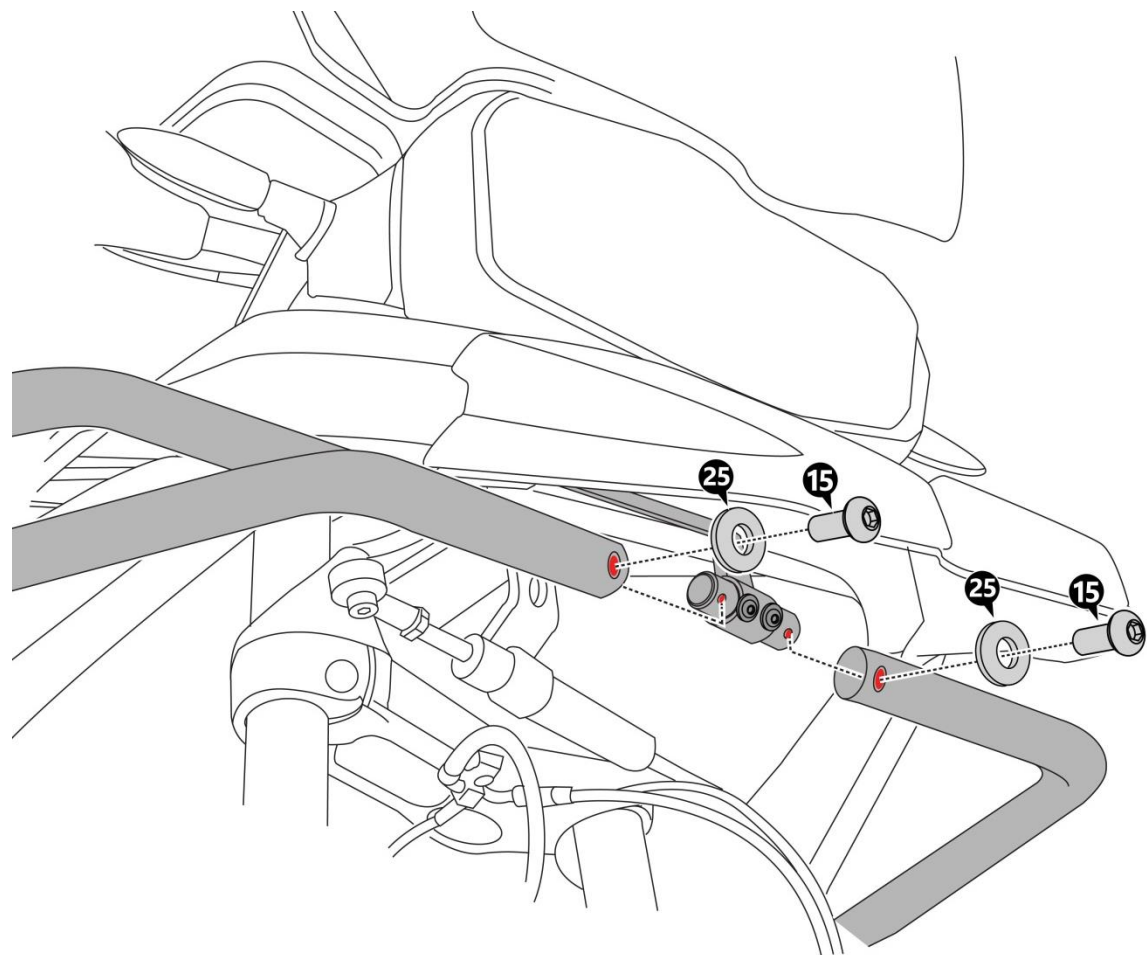
Step 10:

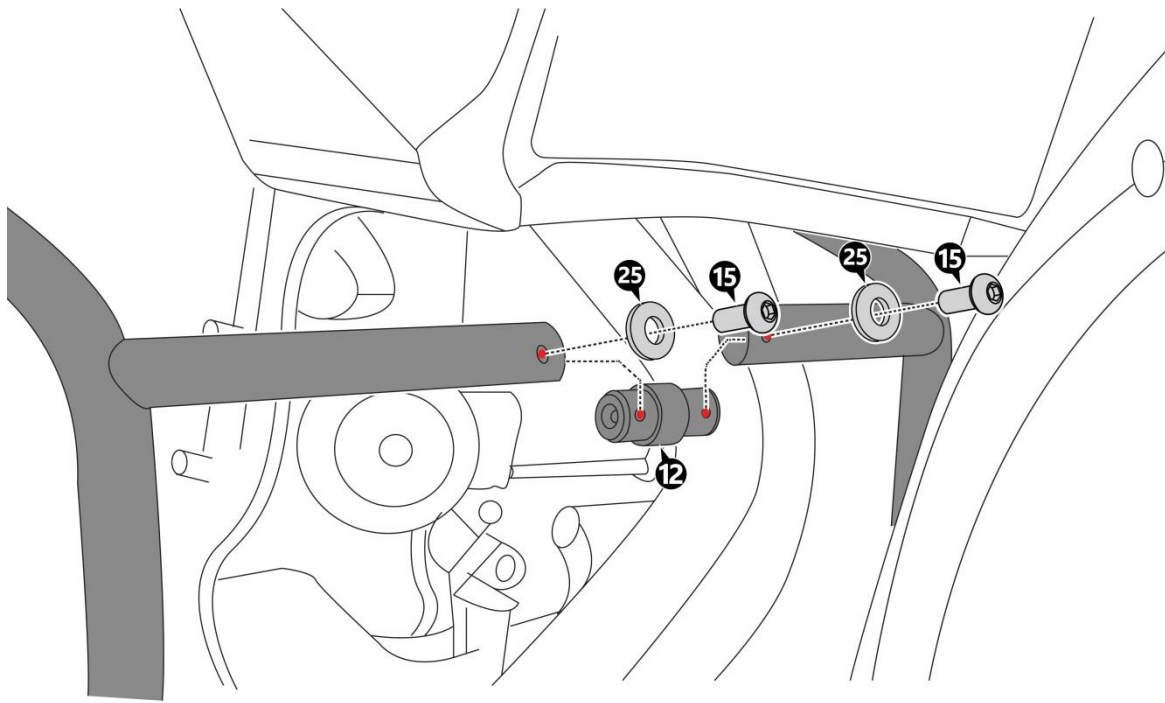
Slide-in the Screw M10 x 35 (20) –1 off, Washer M10 (27) the Screw M10 x 30 (19) –1 off, the Lower Crash Bar LH (3), Nut M10 (24) and through the Mounting hole in the Bracket LH (7) and secure the threads in the Motorbike.

Step 11:

Orient the Top End of the Crash Bar RH (1) & LH (2) to the Pin pipe Upper (13) attached to the Top Bracket (5).

And Slide-in Screw M6x15 (15) – 2 off, and Washer M6 (25) – 2 off, through the Mounting hole in the Crash Bar.





Step 12:

Align the Lower Crash Bar LH&RH, as shown, and slide-in Screw M6 x 15 (15) – 2 off and Washer M6 (25) – 2 off and secure the threads in the other end of the Pin pipe (12).

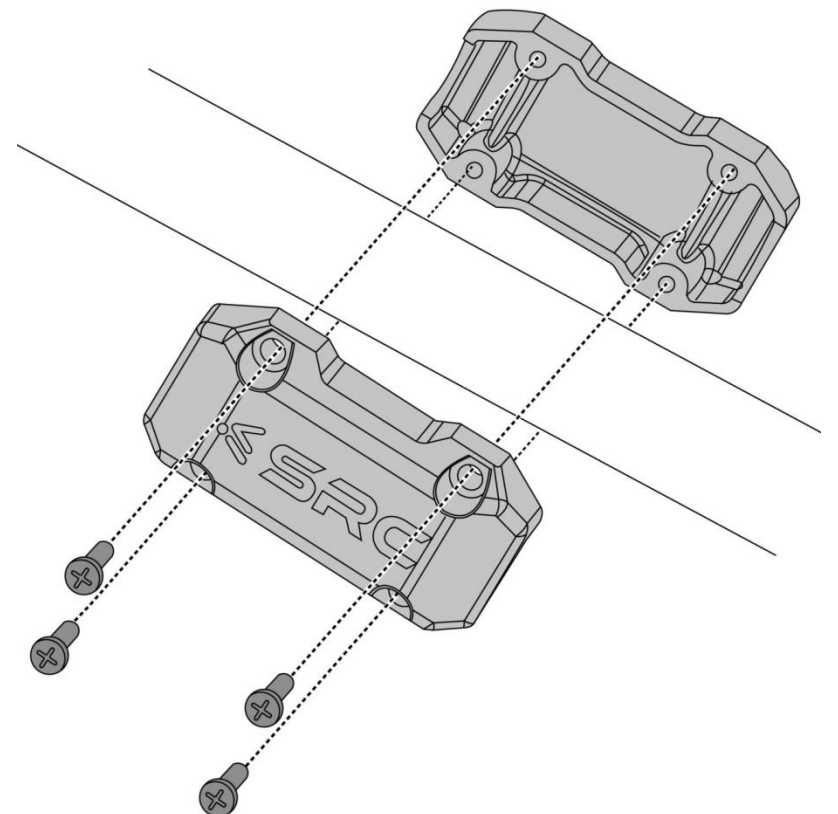
Step 13:

Assemble the Slider Bar on each of the Crash Bar as shown.

Use the Slider Bar as the Virtual Orientation and looking from the front side of the Motorbike, make one final Positioning and Alignment of the Crash bars.

Ensure mounting symmetry of the Slider Bars visually (it must not be offset or shifted visually when seen from the front side and back side).

All Mounting fasteners can be tightened to the torque, as specified in the BOM table.





General Information

1. We request you to pay attention to the Mounting Instructions in this document and follow the step-by-step procedures.
2. This Mounting Instruction manual is a “Do It Yourself” (DIY) fitment manual of the Accessory part to the Vehicle. We have prepared this based on our experience and knowledge, related to the Vehicle, Part and its functional aspects.
3. SRC cannot guarantee the interchangeability of the parts to any other manufacturer’s accessory part. It is advised to the User, to inspect and ensure the original state of all other Vehicle parts.
4. We request you to bear in mind, that the Installed part can change the driving behaviour and/or the stability during driving or any other dynamic conditions.
5. If you have the appropriate tools and another person to assist you in the mounting, it will help.
6. To the maximum extent possible, our design use the current Mounting/Fitment of the Original Equipment, so that Installation of these accessories will not affect the Payload or Function of the Vehicle or the Part on which it is mounted to protect it
7. If any additional modifications are to be done, prior to the fitment of the accessories, it will be explicitly specified in the instruction sheets.