

## Scope of Supply/Bill of Material & Mounting Drawings

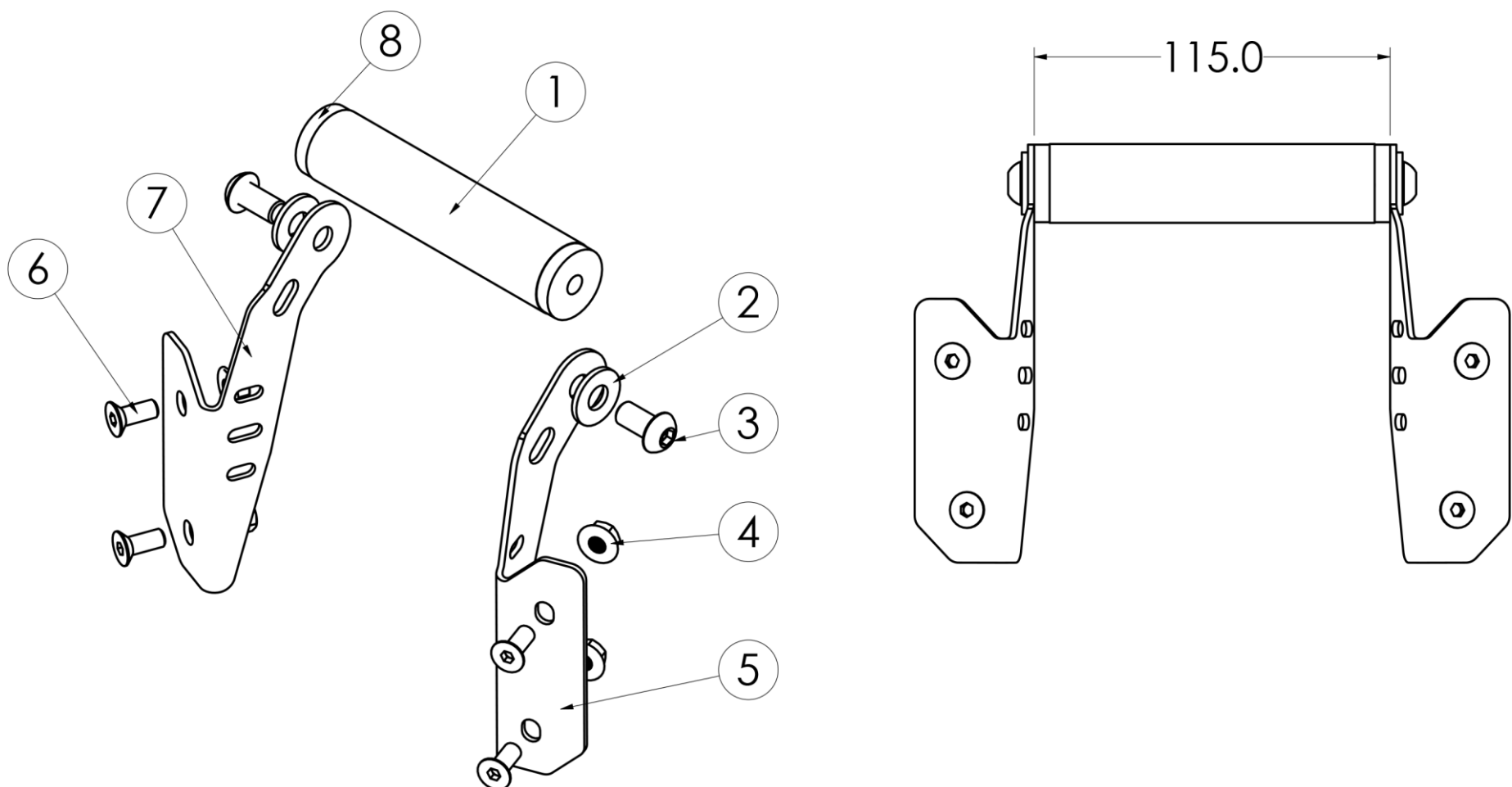
Part Number: K-VS1000-19-07-01-SL / K-VS1000-19-07-02

Part Description: GPS Bar – KAWASAKI VERSYS1000 2019-2021

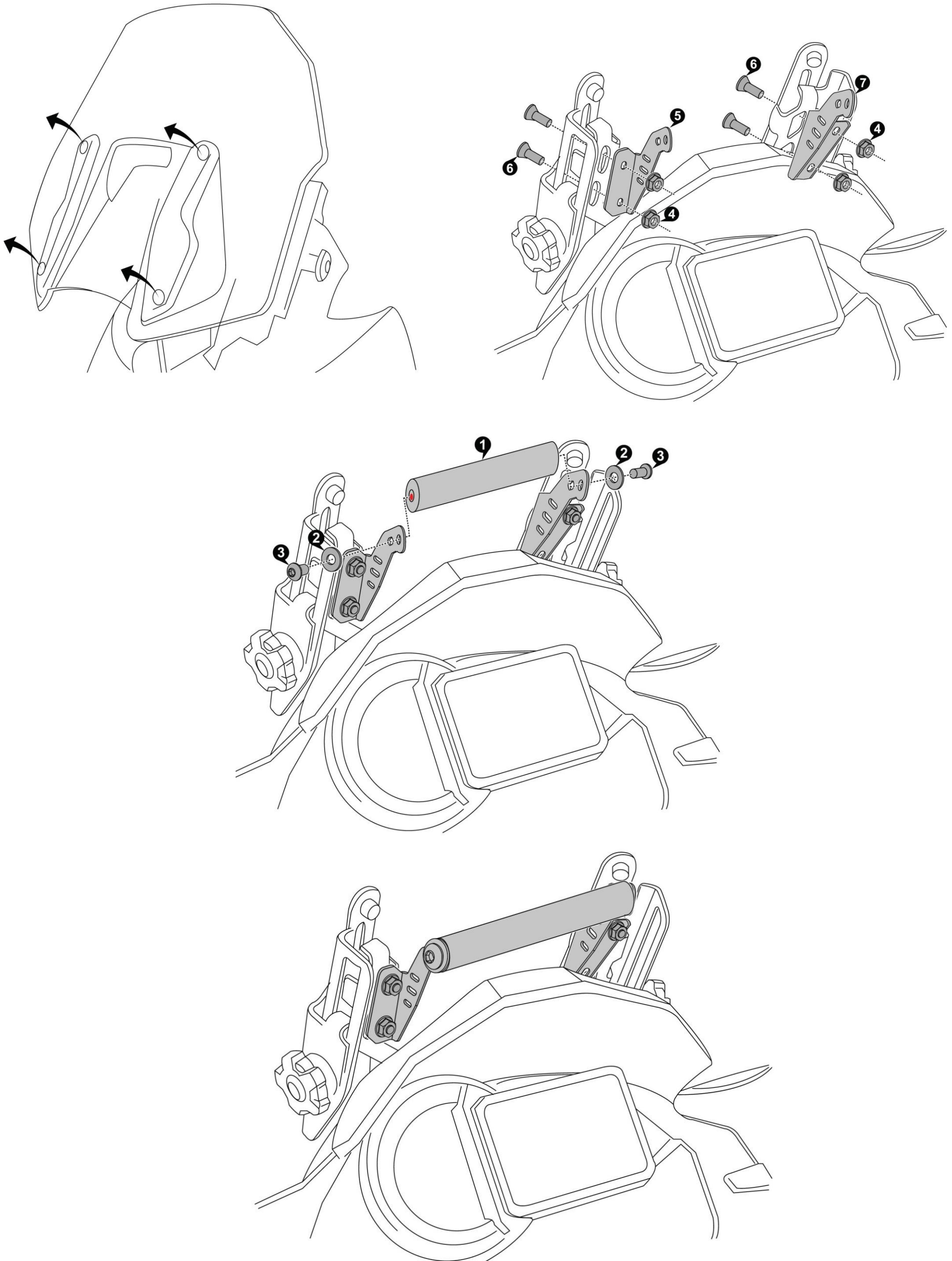
Applicable to Stainless Steel & Steel Version

### Installation / Parts List / Bill of Material for Mounting

NO.	Description	Quantity	Torque * (N-M)	Remarks **	Check List
1	Bar	1			
2	Washer M8	2			
3	Hex sockt button head M8x15	2	22 - 24	Use Liquid Thread Locker	
4	Nut M6	4			
5	Bracket RH	1			
6	Countersink Screw M6 X 15	4	9 -10	Use Liquid Thread Locker	
7	Bracket LH	1			
8	And Adeptor	2			
SRC Design uses Metric System of Measurement and all dimensions in Millimeters					
* Recommended to use the Torque specified in the table					
** Denotes Usage of Liquid Thread Locker in specified Locations					

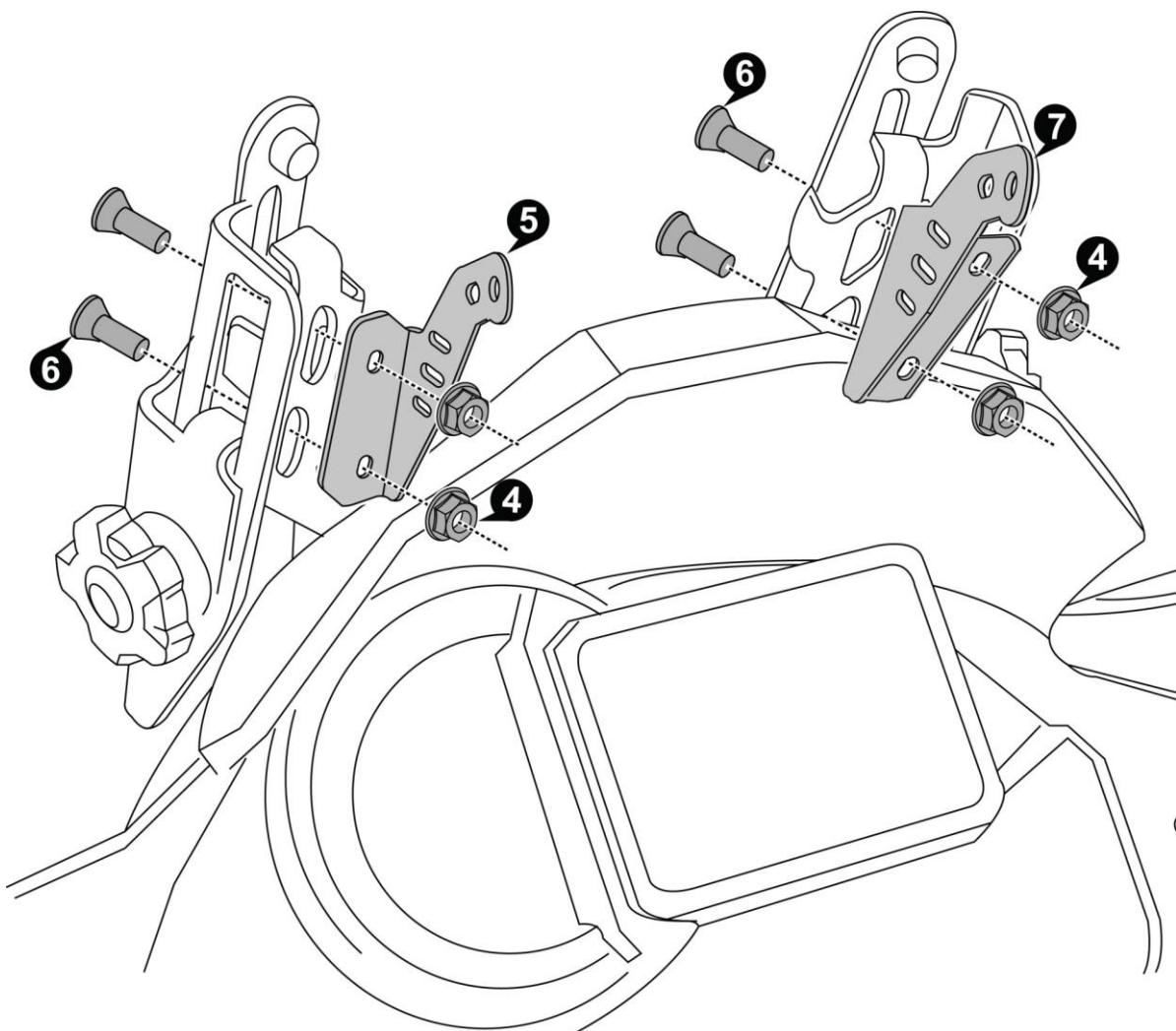
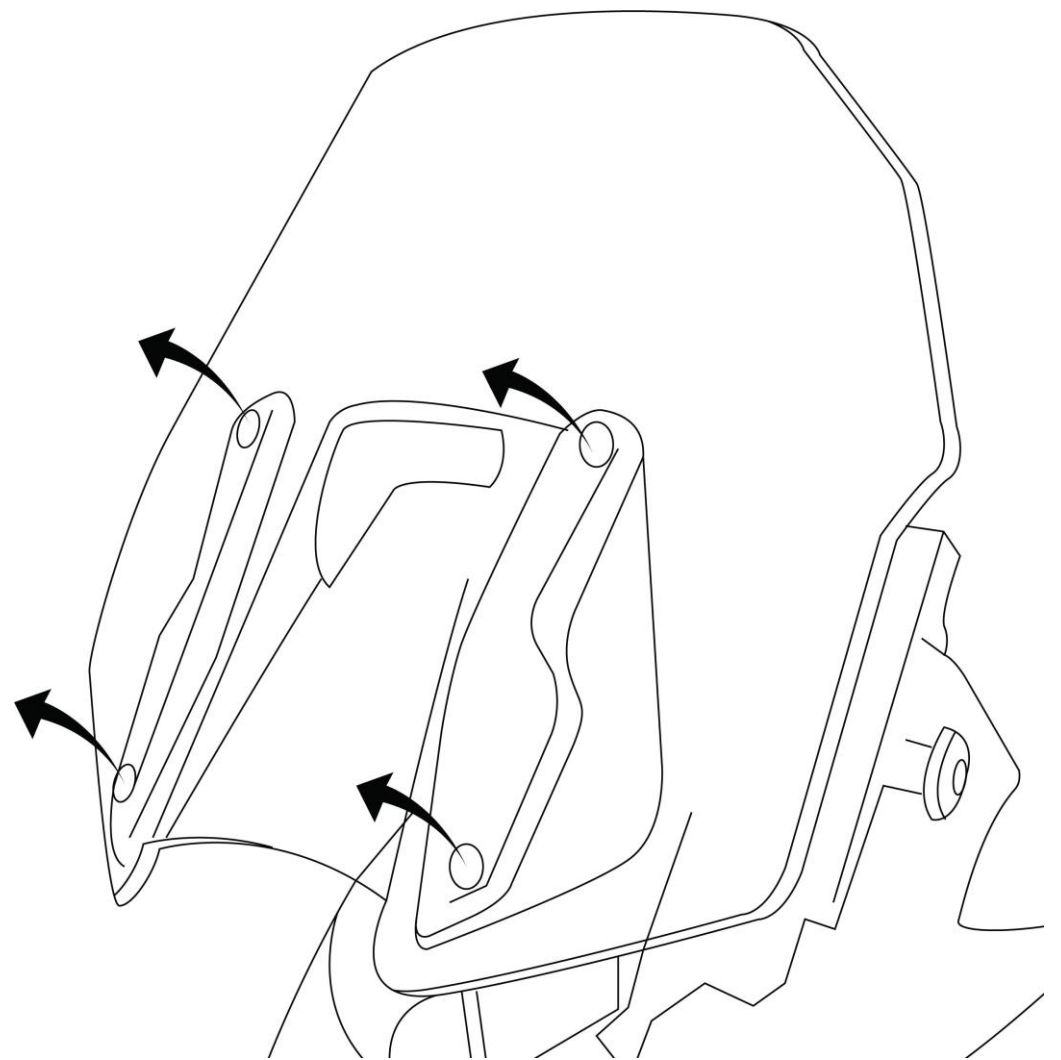


## MOUNTING DRAWINGS



### Step 1:

**First step, while mounting the SRC-GPS Bar is to remove the Wind-Shield screen, as shown.**



### Step 2:

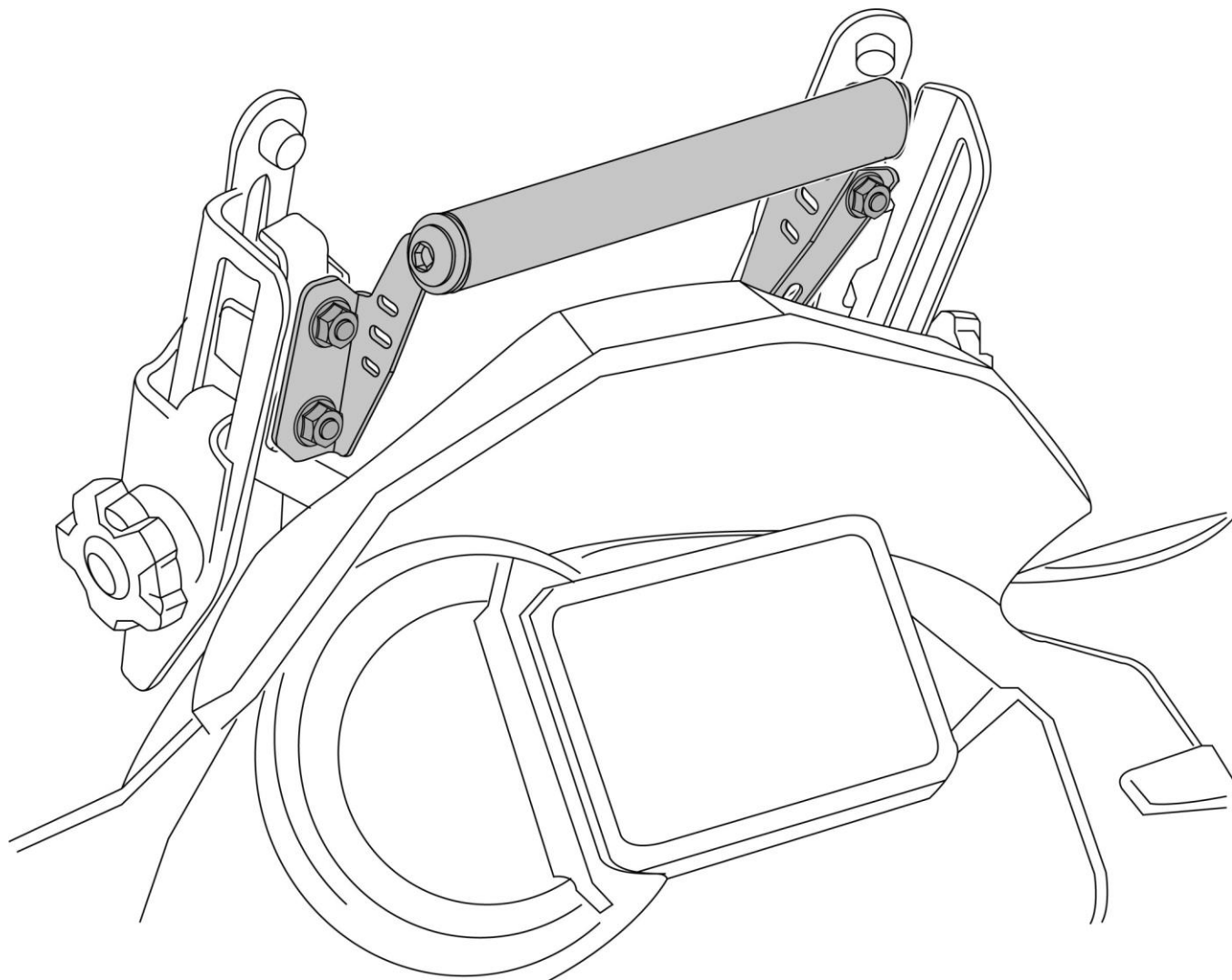
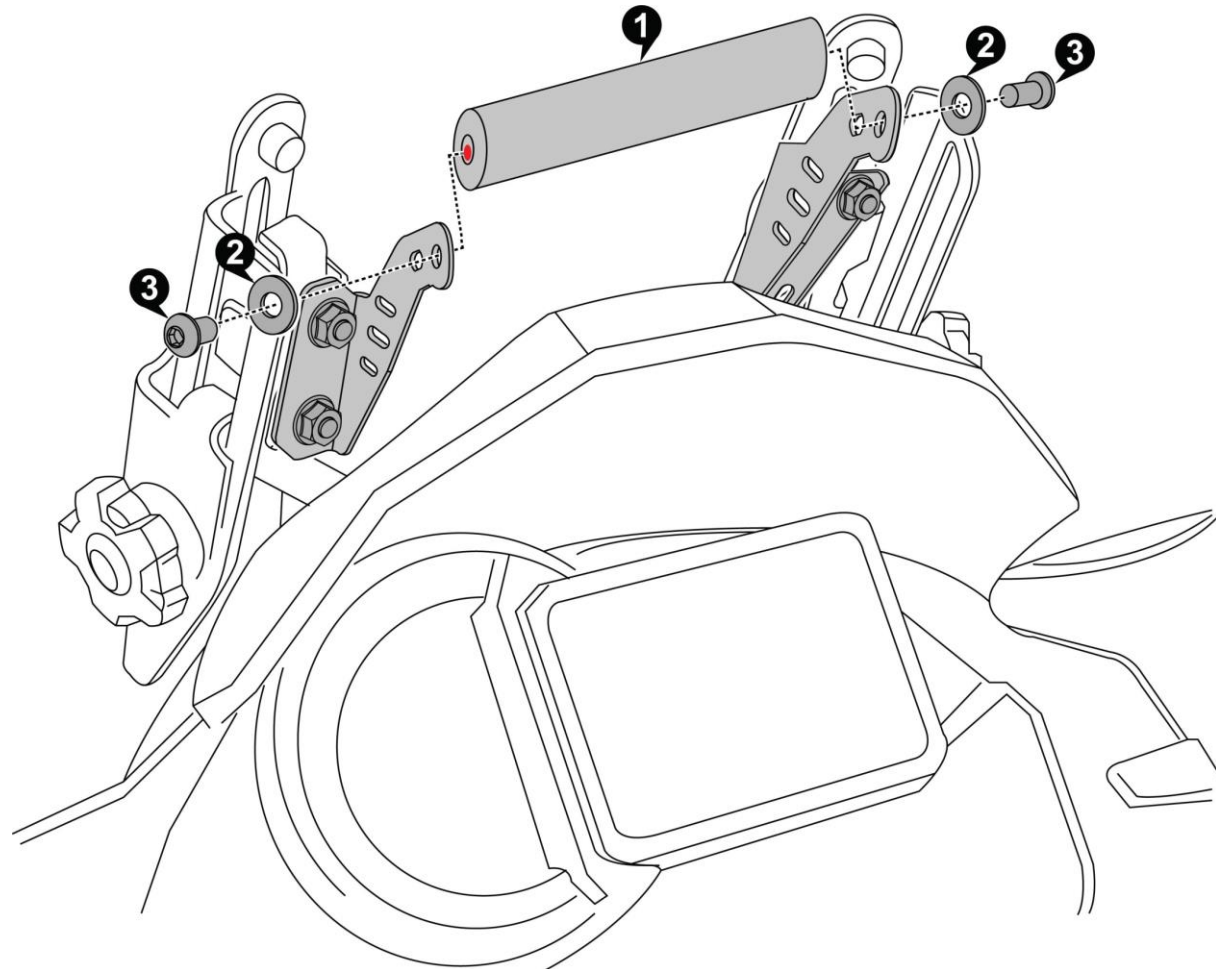
**Orient and Align the Bracket RH (7) and Bracket LH (5), as shown in the drawing and Slip-in the Screws M6x15 (6) , and Nut M6 (4), through the Mounting holes in the the brackets, as shown.**

**Step 3:**

**Mounting of the GPS Bar**

The GPS Bar (1) has 2 Threaded End Adaptors integral to it.

Slip in the Washer M8 (2) –2 off from either sides, and Screw M8 x 16 (3) –2 off from either sides, through the hole in the Brackets and secure the threads to the End Adaptor and tighten them to torque as per specifications in the BOM table.



**GPS Bar in Final Mounted condition is as shown above.**



## General Instructions

1. We request you to pay attention to the Mounting Instructions in this document and follow the step-by-step procedures.
2. This Mounting Instruction manual is a “Do It Yourself” (DIY) fitment manual of the Accessory part to the Vehicle. We have prepared this based on our experience and knowledge, related to the Vehicle, Part and its functional aspects.
3. SRC cannot guarantee the interchangeability of the parts to any other manufacturer’s accessory part. It is advised to the User, to inspect and ensure the original state of all other Vehicle parts.
4. We request you to bear in mind, that the Installed part can change the driving behaviour and/or the stability during driving or any other dynamic conditions.
5. If you have the appropriate tools and another person to assist you in the mounting, it will help.
6. After Completion of the Mounting and before taking on a First ride, Ensure and Check all functions of the Vehicle. It is always advised to check loosening of the fasteners after the first 50 kilo meters of ride and at regular intervals.
7. To the maximum extent possible, our design use the current Mounting/Fitment of the Original Equipment, so that Installation of these accessories will not affect the Payload or Function of the Vehicle or the Part on which it is mounted to protect it
8. If any additional modifications are to be done, prior to the fitment of the accessories, it will be explicitly specified in the instruction sheets